

Professional Lighting Solutions



# ALDEBARAN<sup>®</sup> 4000A X SERIES. 4000A X1 SIGNAL SERIES.

The innovation of mobile light enters the next round



# Professional

Lighting Solutions

## ALDEBARAN® 4000A X SERIES

Cordless, powerful and glare-free. Furthermore robust and easy to handle. - These are the genes of the **4000A series**. These genes were sharpened once more with the new luminaires of the **ALDEBARAN® 4000A X series**. While the light power could be increased by more than 70%\* in contrast to the predecessor series by using highly efficient special LED area arrays, the glare-freedom was kept at the same time. While some luminaires of other manufacturers in this price segment make you see bright "dots" afterwards, our glare-free special LEDs make a perfectly steady illumination and safe sight possible – all the time.

Because good light means safety. The **4000A X** concept is topped off by different available battery capacities, which allow you to adjust your luminaire according to your own demands to individual running time wishes. The **Low Battery Message System (LBMS)** shows you on time when the battery capacity reaches a low level and it might have to be recharged if necessary. That way, you are never in the dark unexpectedly.

If the battery capacity is running completely empty nevertheless during long uses, especially in the outdoor area, the integrated **"take me home"** feature of the **4000A X luminaires** makes finding it in the dark pretty easy. For that, your luminaire signalises its location with an integrated, automatic red light flashing feature.

## ALDEBARAN® 4000A X1 SIGNAL SERIES

It is nothing new that light equals safety. With the introduction of the **4000A X series**, we greatly paid attention to the aspect of work safety and the maximum usability.

The strengths of the **4000A X luminaires** such as hour-long, cableless operation, homogeneous and glare-free light proved worthy, even under hardest operating conditions. With the **ALDEBARAN® 4000A X1 SIGNAL series**, we created a new generation of professional lights that pay special attention to the topic of safety.

With a specially developed LED array, the **4000A X1 SIGNAL** lights are not only capable of producing homogeneous, white working light, but also can be switched to a colourful flashing light. This signaling light belongs to the strongest signaling light sources that are available in the form of a hand light. Usually, common mobile lights treat their colourful signaling function rather shabbily with signaling light power of one to three Watts. The **X1 SIGNAL lights** are capable of producing its signaling light with the same power (up to 12 Watts) as the powerful working light. The difference is clearly visible and perceptible even over great distances. Because the right light can save lives.

## ADVANTAGES

### eXtremely ROBUST

- Extremely robust with luminaire body made of air plane aluminium
- Shock-proof diffusing lens made of polycarbonate
- Reduced slip-resistant, rubberised control elements which can be used even with gloves on
- High-quality **lithium ion technology** offers stable power through all temperature ranges

### eXtremely POWERFUL

- Glare-free, homogeneous light generation via high-power LED area arrays
- The **SETO safe light system** avoids glaring lastingly and therefore the „subsequent seeing of colourful spots“ in contrast to other LED light sources
- High power signaling function for maximum safety and visibility *(only for 4000A X1 SIGNAL SERIES)*
- Light power steplessly adjustable and therefore adaptable to each situation

### eXtremely INTELLIGENT

- Operation possible with integrated batteries and/or with the included charger
- Early recognition of low battery capacity via „**Low Battery Message System (LBMS)**“
- Integrated „**Take Me Home**“ feature makes finding the luminaire in the dark possible
- Wide accessory range for optional features like the vehicle charging. Magnet holders, stand holders etc.

\* Comparison ALDEBARAN 4000A X1 to ALDEBARAN 4000 1 x 9 Watts



# ALDEBARAN® 4000A X SERIES WITH 3,000 REAL LUMEN\* UP TO 30 HOURS\*2 LIGHTING DURATION THE INNOVATION OF MOBILE LIGHTING ENTERS THE NEXT ROUND



## ALDEBARAN® 4000A X1 33Wh

Power consumption: **12 W**  
 Illuminant: LED-Array-Technology  
 Luminous flux (REAL LUMEN)\* approx.: **1,500 lm**  
 Lighting duration approx.: Full power: **2.5 hrs**  
 Low power: **16 hrs**  
 Colour temperature approx.: 5000 K  
 CRI: >80  
 Life time: 50,000 hrs

Battery: **LI-ION 33 Wh**  
 Charging time (2A charger) approx.: **1.5 hrs**  
 Valid operating temperature: -20 °C to +40 °C  
 Valid charging temperature: 0 °C to +40 °C  
 Dimensions (LxWxH) approx.: **267 x 120 x 145 mm**  
 Weight approx.: **1.05 kg**  
 IP code: IP54

Item no.: **144080020**

## ALDEBARAN® 4000A X1 66Wh

Power consumption: **12 W**  
 Illuminant: LED-Array-Technology  
 Luminous flux (REAL LUMEN)\* approx.: **1,500 lm**  
 Lighting duration approx.: Full power: **5 hrs**  
 Low power: **32 hrs**  
 Colour temperature approx.: 5000 K  
 CRI: >80  
 Life time: 50,000 hrs

Battery: **LI-ION 66 Wh**  
 Charging time (2A charger) approx.: **3 hrs**  
 Valid operating temperature: -20 °C to +40 °C  
 Valid charging temperature: 0 °C to +40 °C  
 Dimensions (LxWxH) approx.: **267 x 120 x 145 mm**  
 Weight approx.: **1.25 kg**  
 IP code: IP54

Item no.: **144080022**

## ALDEBARAN® 4000A X2 66Wh

Power consumption: **22 W**  
 Illuminant: LED-Array-Technology  
 Luminous flux (REAL LUMEN)\* approx.: **3,000 lm**  
 Lighting duration approx.: Full power: **3 hrs**  
 Low power: **20 hrs**  
 Colour temperature approx.: 5000 K  
 CRI: >80  
 Life time: 50,000 hrs

Battery: **LI-ION 66 Wh**  
 Charging time (2A charger) approx.: **3 hrs**  
 Valid operating temperature: -20 °C to +40 °C  
 Valid charging temperature: 0 °C to +40 °C  
 Dimensions (LxWxH) approx.: **385 x 120 x 145 mm**  
 Weight approx.: **1.6 kg**  
 IP code: IP54

Item no.: **144080021**

## ALDEBARAN® 4000A X2 99Wh

Power consumption: **22 W**  
 Illuminant: LED-Array-Technology  
 Luminous flux (REAL LUMEN)\* approx.: **3,000 lm**  
 Lighting duration approx.: Full power: **4.5 hrs**  
 Low power: **30 hrs**  
 Colour temperature approx.: 5000 K  
 CRI: >80  
 Life time: 50,000 hrs

Battery: **LI-ION 99 Wh**  
 Charging time (2A charger) approx.: **4.5 hrs**  
 Valid operating temperature: -20 °C to +40 °C  
 Valid charging temperature: 0 °C to +40 °C  
 Dimensions (LxWxH) approx.: **385 x 120 x 145 mm**  
 Weight approx.: **1.8 kg**  
 IP code: IP54

Item no.: **144080023**

\*Lumen = Lm / In the „Lumen REAL“ is REAL measured light output quantities

\*2 Corresponds to the max. lighting duration at the lowest level.



① **Dimming feature**

Light output can be steplessly adjusted and thus adapted to the respective situation

② **Luminaire body**

made of extremely **robust airplane aluminium**

③ **Plastic cover**

**Impact-resistant diffusing pane** ④

made of polycarbonate

**High performance LED area arrays** ⑤

guaranteed glare-free, homogeneous light generation











# ALDEBARAN® 4000A X1 SIGNAL SERIES WITH 1,100 REAL LUMEN\* UP TO 38 HOURS\*<sup>2</sup> LIGHTING DURATION STRONG TECHNOLOGY WITH THE HIGH POWER SIGNAL LIGHT FUNCTION FOR MAXIMUM SIGNALLING



## ALDEBARAN 4000A X1 POLICE 33Wh / 66Wh

Power consumption:	12W	12W
Illuminant:	DUAL LED-Array-Technology	DUAL LED-Array-Technology
Luminous flux (white) 100%* approx.:	1,100 lm	1,100 lm
Luminous flux (colour) 100% approx.:	<b>463 nm (blue)</b>	<b>463 nm (blue)</b>
Lighting duration (white) 100% approx.:	3 hrs	6 hrs
Lighting duration (white) 15%* <sup>2</sup> approx.:	19 hrs	38 hrs
Lighting duration flashing mode (colour) approx.:	8 hrs	16 hrs
Colour temperature (white) approx.:	5000 K	5000 K
CRI (white):	>70	>70
Life time:	50,000 hrs	50,000 hrs

Battery capacity:	LI-ION 33 Wh	LI-ION 66 Wh
Charging time (2A charger) approx.:	2 hrs	4 hrs
Ambient temperature:	-30°C to +40 °C	-30°C to +40 °C
Dimensions (LxWxH) approx.:	267 x 120 x 145 mm	267 x 120 x 145 mm
Weight approx.:	1.05 kg	1.25 kg
IP code:	IP54	IP54

**Item no.:** **1440800062** **1440800063**

## ALDEBARAN 4000A X1 TRAFFIC 33Wh / 66Wh

Power consumption:	12W	12W
Illuminant:	DUAL LED-Array-Technology	DUAL LED-Array-Technology
Luminous flux (white) 100%* approx.:	1,100 lm	1,100 lm
Luminous flux (colour) 100% approx.:	<b>594 nm (umber)</b>	<b>594 nm (umber)</b>
Lighting duration (white) 100% approx.:	3 hrs	6 hrs
Lighting duration (white) 15%* <sup>2</sup> approx.:	19 hrs	38 hrs
Lighting duration flashing mode (colour) approx.:	8 hrs	16 hrs
Colour temperature (white) approx.:	5000 K	5000 K
CRI (white):	>70	>70
Life time:	50,000 hrs	50,000 hrs

Battery capacity:	LI-ION 33 Wh	LI-ION 66 Wh
Charging time (2A charger) approx.:	2 hrs	4 hrs
Ambient temperature:	-30°C to +40 °C	-30°C to +40 °C
Dimensions (LxWxH) approx.:	267 x 120 x 145 mm	267 x 120 x 145 mm
Weight approx.:	1.05 kg	1.25 kg
IP code:	IP54	IP54

**Item no.:** **1440800060** **1440800061**

## ALDEBARAN 4000A X1 RESCUE 33Wh / 66Wh

Power consumption:	12W	12W
Illuminant:	DUAL LED-Array-Technology	DUAL LED-Array-Technology
Luminous flux (white) 100%* approx.:	1,100 lm	1,100 lm
Luminous flux (colour) 100% approx.:	<b>626 nm (red)</b>	<b>626 nm (red)</b>
Lighting duration (white) 100% approx.:	3 hrs	6 hrs
Lighting duration (white) 15%* <sup>2</sup> approx.:	19 hrs	38 hrs
Lighting duration flashing mode (colour) approx.:	8 hrs	16 hrs
Colour temperature (white) approx.:	5000 K	5000 K
CRI (white):	>70	>70
Life time:	50,000 hrs	50,000 hrs

Battery capacity:	LI-ION 33 Wh	LI-ION 66 Wh
Charging time (2A charger) approx.:	2 hrs	4 hrs
Ambient temperature:	-30°C to +40 °C	-30°C to +40 °C
Dimensions (LxWxH) approx.:	267 x 120 x 145 mm	267 x 120 x 145 mm
Weight approx.:	1.05 kg	1.25 kg
IP code:	IP54	IP54

**Item no.:** **1440800064** **1440800065**

\*Lumen = Lm / In the „Lumen REAL“ is REAL measured light output quantities

\*<sup>2</sup> Corresponds to the max. lighting duration at the lowest level

**Dimming feature**

Light output can be steplessly adjusted and thus adapted to the respective situation

**High performance LED area arrays**

guaranteed glare-free, homogeneous light generation

**Luminaire body**

made of extremely robust **airplane aluminium**

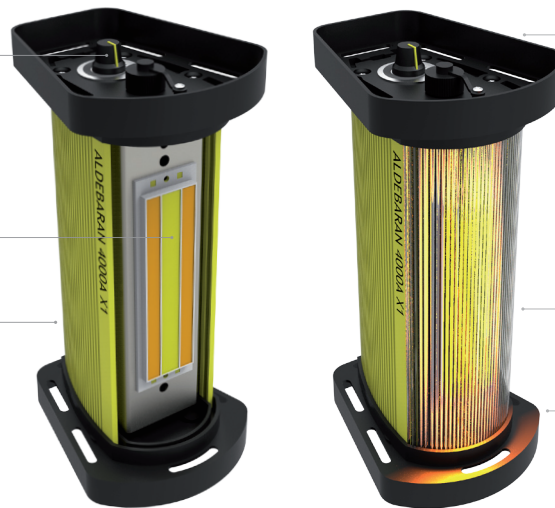
**Integrated colour switching, ④**

from white working light to colourful signal light

**Impact-resistant diffusing pane ⑤**

made of polycarbonat

**Plastic cover ⑥**



## DIVERSE LIGHT FUNCTIONS

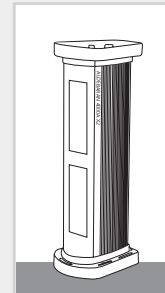
4000A X1 33 / 66 Wh  
4000A X2 66 / 99 Wh



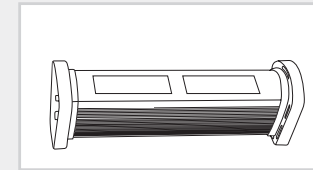
4000A X1 POLICE 33Wh / 66Wh  
4000A X1 TRAFFIC 33Wh / 66Wh  
4000A X1 RESCUE 33Wh / 66Wh



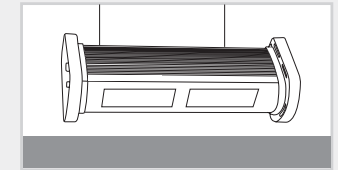
## SEVERAL ALIGNMENTS POSSIBLE



horizontal



vertical

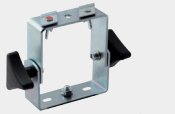


suspended

### UNIVERSAL HOLDER

for X1/X2

Item no.: 1410993420



### MAGNET HOLDER

for X1/X2

Item no.: 1410993421



### CARRYING HANDLE

for X1 / X2

Item no.: 1410993424



### WALL HOLDER

for X1

Item no.: 1410993425

for X2

Item no.: 1410993426



### MAGNET HOLDER

for X2

Item no.: 1410993417

### CHARGER FOR LI-ION BATTERY

for X1/ X2

Input voltage: 12-24V DC,

Output voltage: 16.8 V DC / 0.5A DC,

Cable length: 1.2 m

Item no.: 49\_\_002246





# Professional

Lighting Solutions

**SETOLITE** Lichttechnik GmbH

Bockhackerstr. 13  
42499 Hückeswagen  
Germany

Tel.: +49 (0) 21 92 - 9 36 24-0  
Fax.: +49 (0) 21 92 - 9 36 24-25

E-mail: [info@setolite.com](mailto:info@setolite.com)  
Internet: [setolite.com](http://setolite.com)

Your Retailer for SETOLITE Products

